

MARIN LOCAL AGENCY FORMATION COMMISSION

RESOLUTION NO. 20-05

**RESOLUTION REAFFIRMING THE SPHERE OF INFLUENCE OF
COUNTY SERVICE AREA #13**

WHEREAS upon determination and adoption of a sphere of influence, the Marin Local Agency Formation Commission is required to periodically review and update adopted spheres of influence for each city and special district not less than once every five years within Marin County under Government Code Section 56425 (g); and

WHEREAS the Executive Officer has conducted a review of the adopted sphere of influence of local government agencies in the San Rafael area, prepared a summary, *San Rafael Regional Municipal Service Review*, including his recommendations thereon, the summary having been presented to and considered by this Commission; and

WHEREAS a public hearing by this Commission was held on the *San Rafael Regional Municipal Service Review and sphere of influence* and staff's recommendations contained in that report on the date and at the time noticed thereof, and at the hearing this Commission heard and received all oral and written testimony, objections and evidence which were made, presented or filed, and all persons present were given an opportunity to hear and be heard with respect to the proposal and the Executive Officer's report.

NOW, THEREFORE, based upon the information contained in the Executive Officer's report, correspondence from affected agencies and information received during the public hearings, the Marin Local Agency Formation Commission **DOES HEREBY RESOLVE, DETERMINE AND ORDER** as follows:

Section 1. The sphere of influence of the County Service Area #13 is hereby reaffirmed without change as shown on Exhibit A attached hereto and incorporated herein by reference and the Commission makes the written determinations pursuant to Government Code section 56425(e) as provided for in Exhibit B attached hereto and incorporated herein by reference.

Section 2. Pursuant to Section 15061(b)(3) of the State CEQA Guidelines, the Commission finds that this review and reaffirmation of the sphere of influence of the County Service Area #13 is exempt from the provisions of the California Environmental Quality Act because it can be seen with certainty that there is no possibility that the activity in question may have a significant effect on the environment.

Section 3. The Executive Officer is hereby directed to mail copies of this resolution to affected local government agencies in the San Rafael area.

PASSED AND ADOPTED by the Marin Local Agency Formation Commission, on February 13, 2020, by the following vote:

AYES: McEntee, Murray, Coler, Kious, Connolly, Arnold, Hader

NOES: None

ABSTAIN: None

ABSENT: None

Sashi McEntee

Sashi McEntee, Chair
Marin LAFCo

ATTEST:

Jason Fried
Jason Fried, LAFCO Executive Officer

APPROVED AS TO FORM:

Malathy Subramanian
Malathy Subramanian, LAFCo Counsel

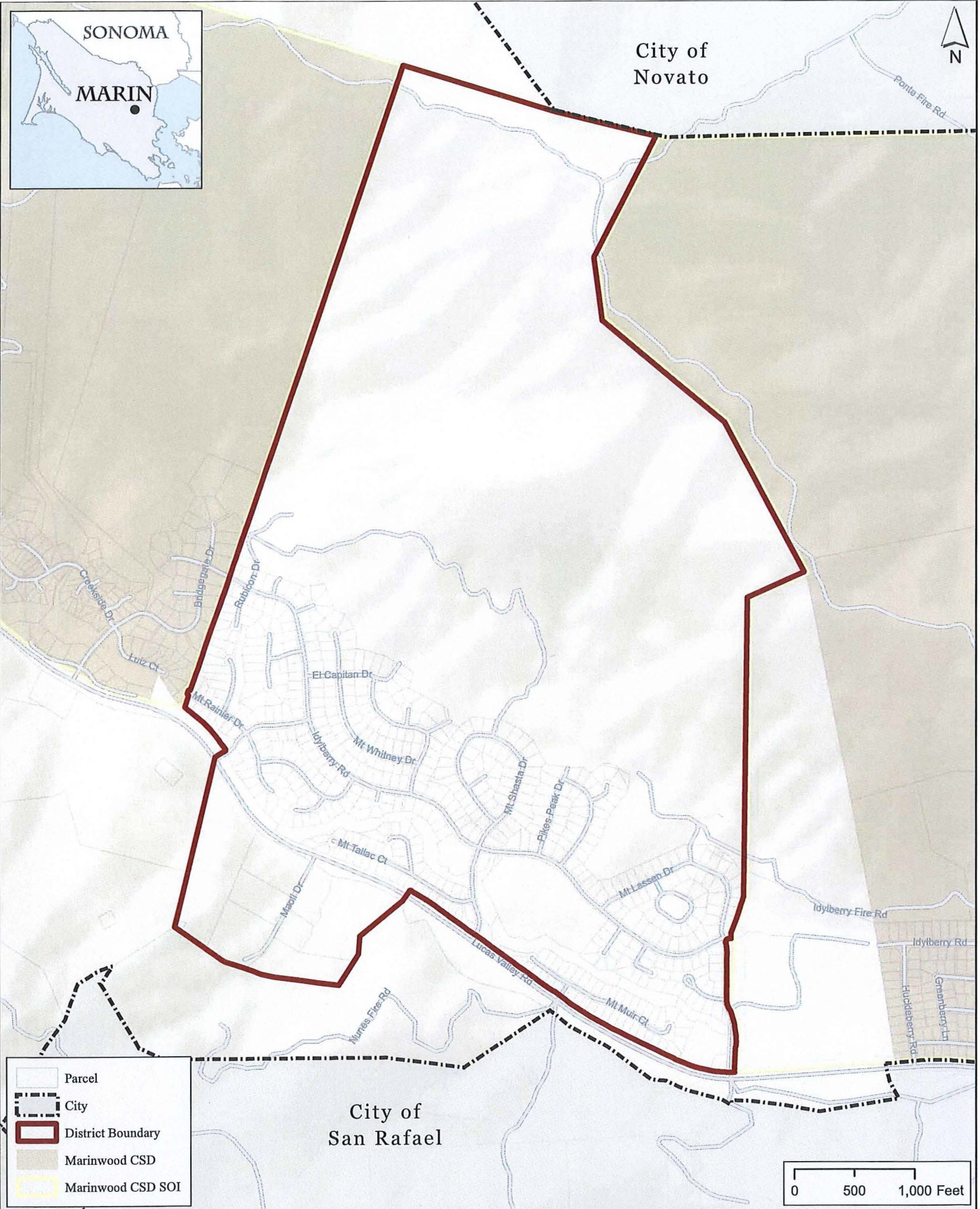
Attachments to Resolution No. 20-05






- a) Exhibit A - Map
- b) Exhibit B - Determinations



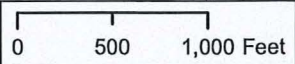
City of Novato

Ponte Fire Rd



-  Parcel
-  City
-  District Boundary
-  Marinwood CSD
-  Marinwood CSD SOI

City of San Rafael



CSA No. 13 - Upper Lucas Valley

Mapping provided by:
PLANWEST PARTNERS, INC.
Map Date: 5/24/2019

Figure 9-1

EXHIBIT B

COUNTY SERVICE AREA #13 SPHERE OF INFLUENCE DETERMINATIONS

GOVERNMENT CODE SECTION 56425

- 1) The present and planned land uses in the area, including agricultural and open-space lands.
 - Present and planned land uses in the area served by County Service Area #13 include low density residential and open space land uses.
- 2) The present and probable need for public facilities and services in the area.
 - Areas included in the County Service Area #13 service area now require and will continue to require the services provided by County Service Area #13.
- 3) The present capacity of public facilities and adequacy of public services that the agency provides or is authorized to provide.
 - The facilities and services provided by County Service Area #13 are sufficient to provide service to the area currently being served by County Service Area #13. Additional funding sources may be required to fund increasing fire protection costs in order to preserve current service levels.
- 4) The existence of any social or economic communities of interest in the area if the commission determines that they are relevant to the city.
 - The Commission has determined that social and economic communities of interest between areas currently within the boundaries of County Service Area #13 and the area surrounding its jurisdiction are not relevant to the determination of the District's sphere of influence.
- 5) For an update of a sphere of influence for a city that provides public facilities or services related to sewers, municipal and industrial water, or structural fire protection, that occurs on or after July 1, 2012, the present and probable need for those public facilities and services of any disadvantaged unincorporated communities within the existing sphere of influence.
 - There are no unincorporated communities within the Study Area that have been identified as disadvantaged.