

MARIN LOCAL AGENCY FORMATION COMMISSION

RESOLUTION NO. 07-14

RESOLUTION AMENDING THE SPHERE OF INFLUENCE OF  
THE SANITARY DISTRICT #1

WHEREAS, the Marin Local Agency Formation Commission is required to periodically review and update adopted spheres of influence for each city and special district within Marin County under Government Code Section 56425; and

WHEREAS, the Executive Officer has conducted a study of the adopted spheres of influence of local government agencies in the Ross Valley area, prepared a report, including his recommendations thereon, the report having been presented to and considered by this Commission; and

WHEREAS, a public hearing by this Commission was held on the *Ross Valley Area Service Review and Spheres of Influence* and staff's recommendations contained in that report on the date and at the time noticed thereof, and at the hearing this Commission heard and received all oral and written protests, objections and evidence which were made, presented or filed, and all persons present were given an opportunity to hear and be heard with respect to the proposal and the Executive Officer's report.

NOW, THEREFORE, based upon the information contained in the Executive Officer's report, correspondence from affected agencies and information received during the public hearings, the Marin Local Agency Formation Commission **DOES HEREBY RESOLVE, DETERMINE AND ORDER** as follows:

Section 1. The sphere of influence of the Sanitation District #1 is hereby amended as an interim sphere of influence coterminous with the existing District boundaries plus the Murray Park and San Quentin Village area as shown on Attachment 1.

Section 2. The statement of determinations required by Government Code Section 56425 are as follows:

The present and planned land uses in the area, including agricultural and open space lands.

Present and planned land uses in the area designated as the sphere of influence of the Sanitary District #1 include low and medium density residential, commercial, industrial, and conservation uses. Present and planned land uses within the District's current boundaries are generally similar to adjacent land uses in areas

designated as within the sphere of influence of the Sanitary District.

The present and probable need for public facilities and services in the area.

Areas included in the District sphere of influence are either approaching build-out of permitted residential density under current provisions of the County's general plan and zoning ordinance or are already within the incorporated area of the Towns in Ross Valley. Established densities and the incidence of failure of individual septic systems in these areas indicate continuing demand for sewer service.

The present capacity of public facilities and adequacy of public services which the agency provides or is authorized to provide.

The district has the ability to provide collection service to its existing customers and to limited growth anticipated within its jurisdiction.

The existence of any social or economic communities of interest in the area if the commission determines they are relevant to the agency.

The Commission has determined that social and economic communities of interest between areas currently within the boundaries of Sanitary District #1 and the area surrounding its jurisdiction are not relevant to the determination of the District's sphere of influence.

Section 3. Pursuant to Section 15320 of the State CEQA Guidelines, the Commission finds that this amendment of the sphere of influence of the Sanitary District #1 is exempt from the provisions of the California Environmental Quality Act because potential changes of organization arising from the amended sphere of influence will not alter the geographic area in which previously existing local government powers are exercised.


Section 4. The Executive Officer is hereby directed to mail copies of this resolution to affected local government agencies in the Ross Valley area.

**PASSED AND ADOPTED** by the Marin Local Agency Formation Commission on this 10<sup>th</sup> day of May, 2007, by the following vote:

AYES: Commissioners Adams, Asbo, Burdick, Heller, McGlashan, Rodoni, Slavitz

NOES: None

ABSENT: Commissioner Blanchfield

  
\_\_\_\_\_  
BARBARA HELLER, Vice-Chairperson

ATTEST:

  
\_\_\_\_\_  
PETER V. BANNING, Executive Officer

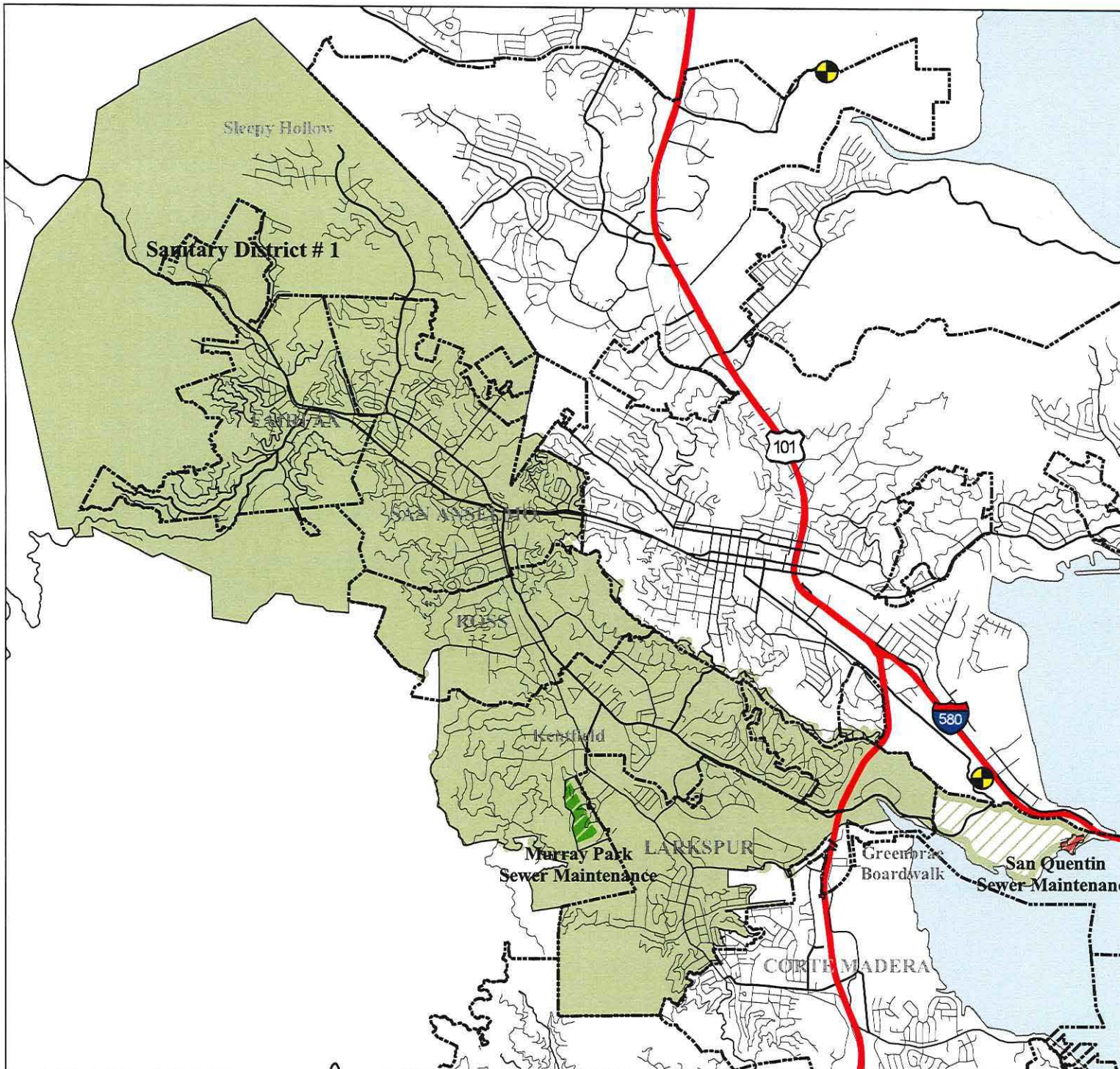
Ross Valley  
Service Review and  
Sphere of Influence Update  
May 2007

Marin Local Agency  
Formation Commission

**Adopted  
Sphere of Influence,  
Sanitary District # 1**

**Legend**

-  Treatment Plant
-  City Boundary
-  Murray Park Sewer Maintenance
-  San Quentin Sewer Maintenance
-  Sanitary District # 1
-  Adopted Sanitary District # 1 SOI



Prepared by:  
COUNTY OF MARIN  
COMMUNITY DEVELOPMENT AGENCY MAPPING/GRAPHICS  
for the:  
LOCAL AGENCY FORMATION COMMISSION

JUNE 2007 FILE: ROSS VALLEY SAN.MXD  
THIS MAP IS REPRESENTATIONAL ONLY. DATA ARE NOT SURVEY ACCURATE.

