

MARIN LOCAL AGENCY FORMATION COMMISSION

RESOLUTION NO. 06-13

RESOLUTION AMENDING THE SPHERE OF INFLUENCE OF
COUNTY SERVICE AREA #18

WHEREAS, the Marin Local Agency Formation Commission is required to periodically review and update adopted spheres of influence for each city and special district within Marin County under Government Code Section 56425; and

WHEREAS, the Executive Officer has conducted a study of the adopted spheres of influence of local government agencies in the San Rafael area, prepared a report, including his recommendations thereon, the report having been presented to and considered by this Commission; and

WHEREAS, a public hearing by this Commission was held on the *San Rafael Area Service Review and Spheres of Influence* and staff's recommendations contained in that report on the date and at the time noticed thereof, and at the hearing this Commission heard and received all oral and written protests, objections and evidence which were made, presented or filed, and all persons present were given an opportunity to hear and be heard with respect to the proposal and the Executive Officer's report.

NOW, THEREFORE, based upon the information contained in the Executive Officer's report, correspondence from affected agencies and information received during the public hearings, the Marin Local Agency Formation Commission **DOES HEREBY RESOLVE, DETERMINE AND ORDER** as follows:

Section 1. In light of the continuing need for the maintenance services funded by County Service Area #18 in the unincorporated areas of the northern San Rafael area and in light of the lack of benefits to, or financial contribution from, the City of San Rafael for County Service Area #18 services, the sphere of influence of County Service Area #18 is hereby amended to include only the unincorporated areas of County Service Area #18.

Section 2. The statement of determinations required by Government Code Section 56425 is as follows:

The present and planned land uses in the area, including agricultural and open space lands.

Present and planned land uses in the area served by County Service Area #18 include low and medium density residential, commercial, industrial, parks/open space and conservation uses.

The present and probable need for public facilities and services in the area.

Areas included in the County Service Area #18 service area now require and will continue to require the services provided by County Service Area #18. Those services may be provided by the City of San Rafael upon eventual annexation of the area to that City.

The present capacity of public facilities and adequacy of public services which the agency provides or is authorized to provide.

The facilities and services provided by County Service Area #18 are sufficient to provide service to the area currently being served by County Service Area #18.

The existence of any social or economic communities of interest in the area if the commission determines they are relevant to the agency.

The Commission has determined that social and economic communities of interest between areas currently within the boundaries of County Service Area #18 and the area surrounding its jurisdiction are not relevant to the determination of the District's sphere of influence.

Section 3. Pursuant to Section 15320 of the State CEQA Guidelines, the Commission finds that this amendment of the sphere of influence of County Service Area #18 is exempt from the provisions of the California Environmental Quality Act because potential changes of organization arising from the amended sphere of influence will not alter the geographic area in which previously existing local government powers are exercised.

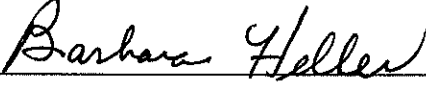
Section 4. The Executive Officer is hereby directed to mail copies of this resolution to affected local government agencies in the San Rafael area.

PASSED AND ADOPTED by the Marin Local Agency Formation Commission on this 8th day of June, 2006, by the following vote:

AYES: Commissioners Adams, Asbo, Burdick, Heller, Rodoni and Slavitz

NOES: None

ABSENT: Commissioner McGlashan

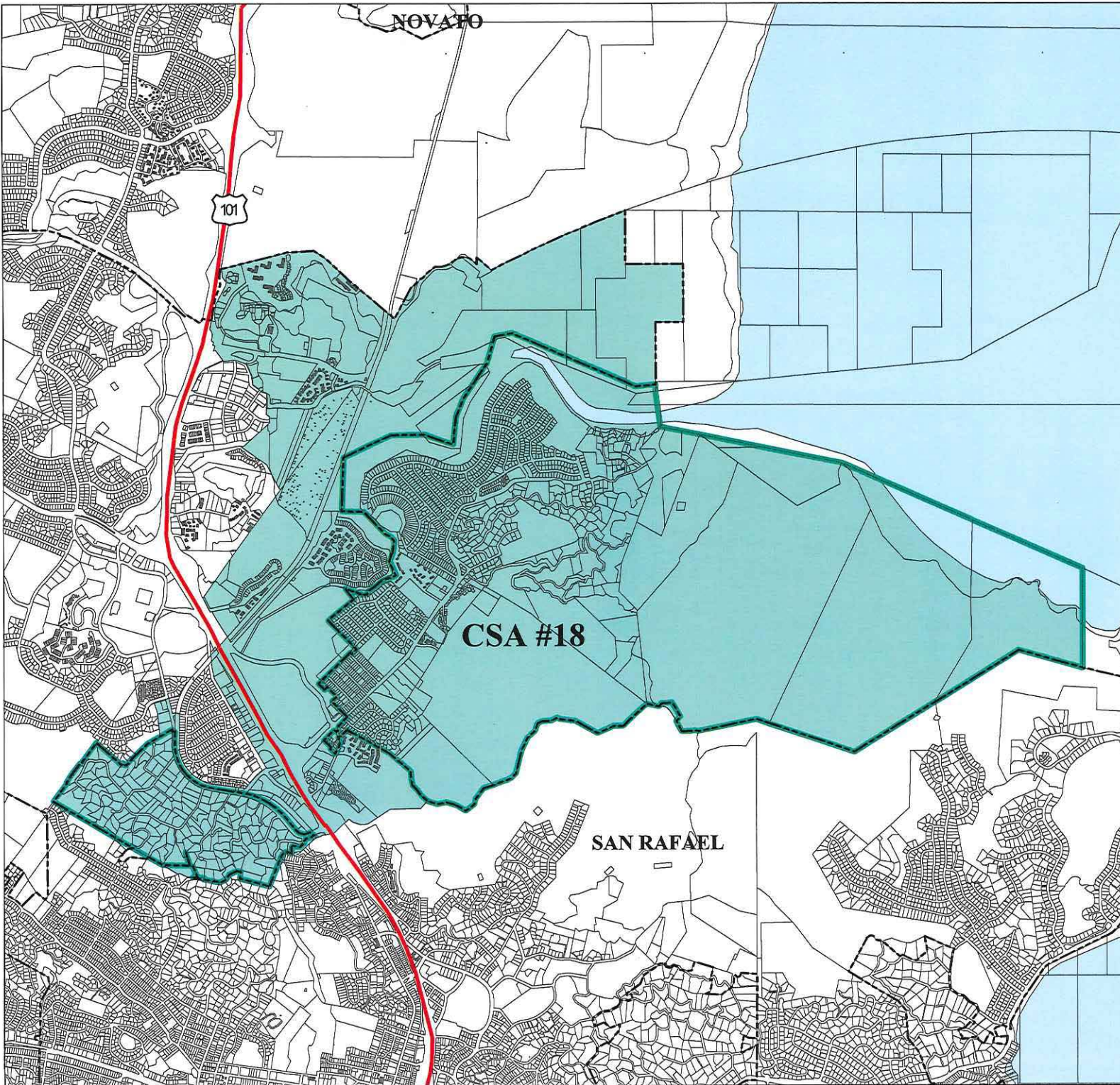


BARBARA HELLER, Vice-Chairperson

ATTEST:



PETER V. BANNING, Executive Officer



San Rafael Area
Service Review and
Sphere of Influence Update
January, 2006

Marin Local Agency
Formation Commission

**Adopted
Sphere of Influence,
County Service Area #18
June 8, 2006**

Legend

-  County Service Area #18
-  County Service Area #18 SOI
-  City Boundary

Prepared by:
COUNTY OF MARIN
COMMUNITY DEVELOPMENT AGENCY MAPPING/GRAPHICS
for the:
LOCAL AGENCY FORMATION COMMISSION

JUNE 2006 FILE: SAN_RAFAEL_SOI_CSA18_ADOPTED
THIS MAP IS REPRESENTATIONAL ONLY. DATA ARE NOT SURVEY ACCURATE.

