



SECRET

CONFIDENTIAL

CONFIDENTIAL

SECRET

CONFIDENTIAL

CONFIDENTIAL

CONFIDENTIAL

CONFIDENTIAL

CONFIDENTIAL

CONFIDENTIAL

CONFIDENTIAL

CONFIDENTIAL

CONFIDENTIAL

CONFIDENTIAL

CONFIDENTIAL

SECRET

CONFIDENTIAL

CONFIDENTIAL

CONFIDENTIAL

CONFIDENTIAL

CONFIDENTIAL

CONFIDENTIAL

CONFIDENTIAL

SECRET

CONFIDENTIAL

CONFIDENTIAL

CONFIDENTIAL

CONFIDENTIAL

CONFIDENTIAL

CONFIDENTIAL

SECRET

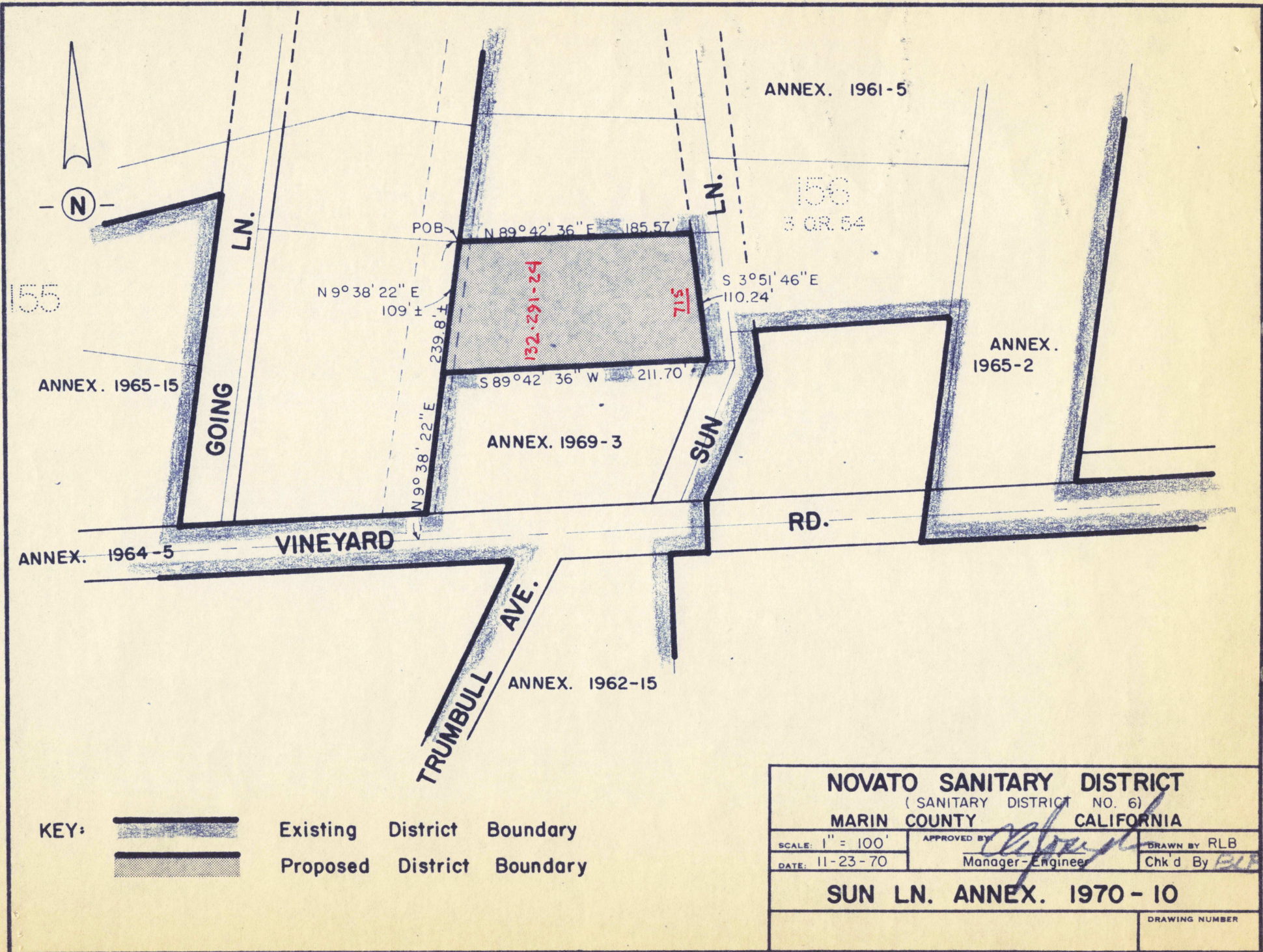
CONFIDENTIAL



SANITARY DISTRICT NO. 6 OF MARIN COUNTY

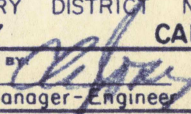
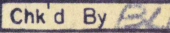
SUN LANE ANNEX 1970-10

EXHIBIT "A"

BEGINNING at a point on the existing boundary of Sanitary District No. 6 of Marin County, said point being on the westerly line of Lot 156 distant North 9° 38' 22" East 239.8 feet, more or less, from the southwesterly corner of said Lot 156 as shown upon that certain map entitled "Amended Map No. 1 of Subdivision 'E' of the Novato Ranch, Marin County, California, filed July 6, 1910 in Book 3 of Maps at Page 54, Marin County Records, running thence from said point of beginning, along said Sanitary District boundary, North 89° 42' 36" East 185.57 feet to the westerly line of an existing 40 foot roadway and utility easement; thence along said westerly line South 3° 51' 46" East 110.24 feet; thence leaving said westerly line South 89° 42' 36" West 211.70 feet to a point on said westerly line of Lot 156; thence leaving said Sanitary District boundary North 9° 38' 22" East 109 feet, more or less, to the point of beginning.



KEY:  Existing District Boundary  
 Proposed District Boundary

<b>NOVATO SANITARY DISTRICT</b> (SANITARY DISTRICT NO. 6) <b>MARIN COUNTY CALIFORNIA</b>		
SCALE: 1" = 100'	APPROVED BY: 	DRAWN BY: RLB
DATE: 11-23-70	Manager-Engineer	Chk d By: 
<b>SUN LN. ANNEX. 1970-10</b>		
		DRAWING NUMBER